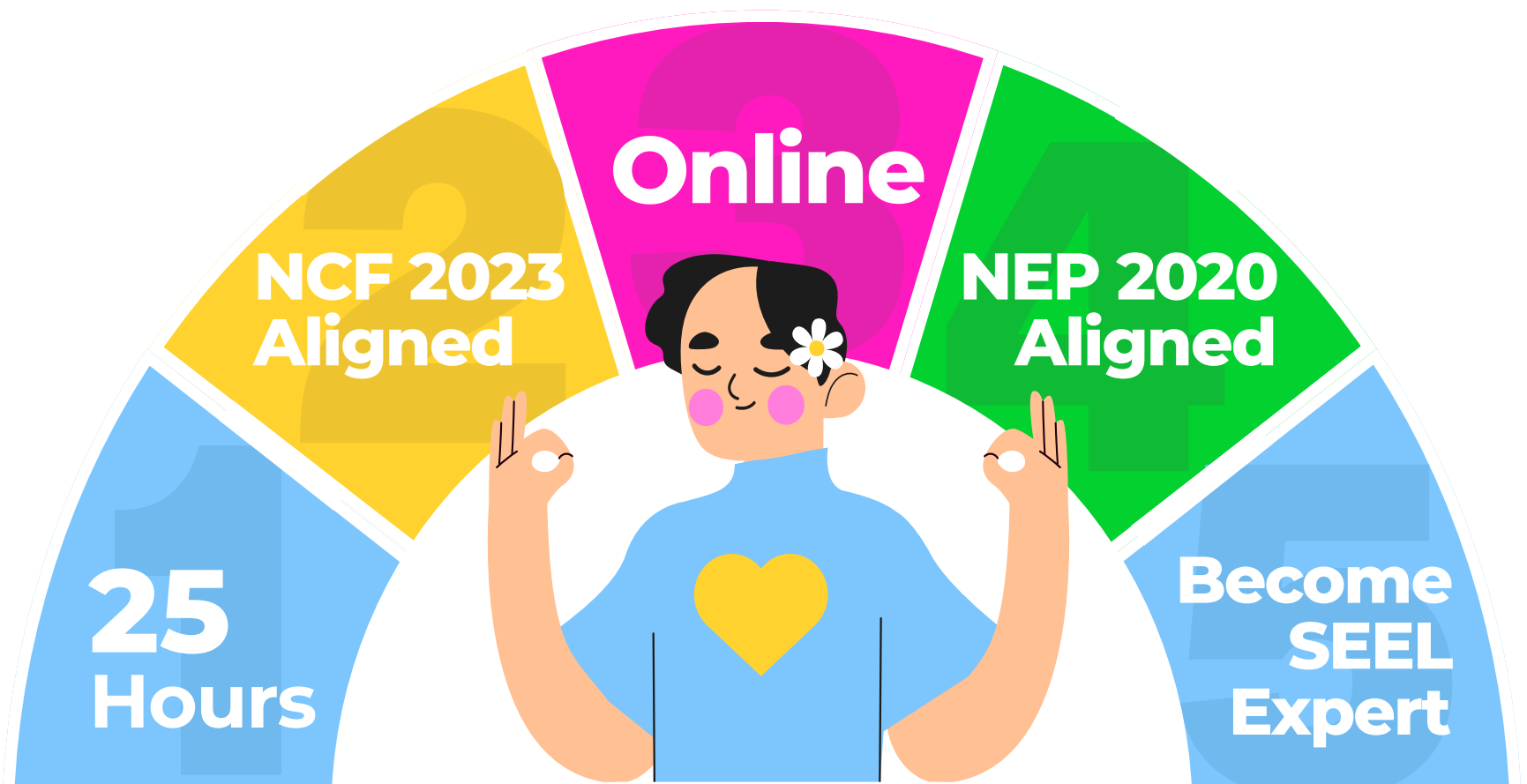




# Social, Emotional, Ethical, and Logical Learning

## SEEL Certification

*Become India's One of the few First SEL coach!*



# Introduction To Preventive Mental Health

3

*Powered By Social, Emotional, Ethical and Logical Learning (SEEL).*

NGN Learning is excited to introduce our **Preventive Mental Health Diploma Certificate Program** made to align with the National Educational Policy (NEP) 2020 and the National Curriculum Framework (NCF) 2023.

This accredited program offers **25 hours** of Continuing Professional Development (CPD) in line with MHRD guidelines (NEP 2020, Page 22). Designed to equip educators with essential skills in **Social, Emotional, Ethical, and Logical (SEEL)** development, the program promotes a holistic approach to student well-being.

Its purpose is to foster supportive educational environments, reduce mental health issues, and enhance overall academic success. Educators will benefit from professional growth, improved teaching strategies, and the ability to create inclusive and mentally healthy learning spaces, ultimately leading to better outcomes for both students and educators.



# SEEL for Educators

## Student Wellbeing with NEP 2020

This comprehensive preventive mental health training, aligned with the **National Education Policy 2020** (NEP 2020) and built upon **Social, Emotional, Ethical, and Logical Learning** (SEEL) principles, equips educators with essential skills and strategies.

The program empowers educators to:

- Recognize and understand emotions
- Manage student behaviors effectively
- Foster empathy and positive communication
- Create supportive, inclusive classrooms
- Integrate SEEL seamlessly into lessons
- Support diverse learning styles and Children With Special Needs (CWSN)

This SEEL-based training equips educators with skills to cultivate a thriving learning environment that prioritizes student well-being (aligned with NEP 2020). Explore emotions, foster empathy, and create inclusive classrooms. Gain practical tools to integrate SEEL principles and support diverse learners.

Educators become champions, nurturing well-rounded individuals. Enroll and empower the future!



# Index

## 02 INTRODUCTION

Introduction to Preventive Mental Health

## 03 SEEL FOR EDUCATORS

Student Wellbeing with NEP 2020

## 05 SYLLABUS

Weekly syllabus with the respective modules in each week.

## 08 REQUIREMENTS

Who is this course for and who is it suitable for?

## 09 BENEFITS

Preventive Mental Health Care Diploma Certificate Benefits

## 10 SEEL FRAMEWORK

Understanding SEEL Framework

## 11 SAMPLE CERTIFICATE

A sample of the certificate you will get once you finish the course.

## 12 FAQs

Frequently Asked Questions about the course.

## 13 OUR TEAM

The Team who is behind this course.

# Syllabus

5

Week

Modules

Learning Outcome

Week 1

## Self Awareness

3 hours

1/ Reflection Questions  
2/ Reading Section  
3/ 2 Videos  
4/ 1 Worksheet  
5/ 2 Assignments  
6/ Quiz

Learn to **recognize** and **manage** emotions, **differentiate** thoughts from feelings, **Journaling**, and foster **self-awareness** in students.

Our course consists of practical strategies like **journaling, mindfulness, and peer feedback** that promote a positive learning environment and enhance academic success.

Week 2

## Self Management

3 hours

1/ Reflection Questions  
2/ Reading Section  
3/ 2 Videos  
4/ 1 Worksheet  
5/ 2 Assignments  
6/ Quiz

Discover the importance of **self-management** in maintaining a conducive learning environment.

Learn effective strategies to **manage negative emotions**, and **classroom behaviors**, and **cultivate resilience** among students.

Gain insights into fostering a **growth mindset**, promoting **positive thinking**, and **transforming teaching practices**.

Week 3

## Social Awareness

3 hours

1/ Reflection Questions  
2/ Reading Section  
3/ 2 Videos  
4/ 1 Worksheet  
5/ 2 Assignments  
6/ Quiz

Elevate your teaching with our course focused on **social awareness**.

Understand social cues, practice perspective-taking, and demonstrate empathy to foster an **inclusive classroom**.

Learn techniques for **positive communication**, creating a friendly environment, and embracing diversity.

Week

Modules

Learning Outcome

## Week 4

**Responsible Decision Making**

2 hours

1/ Reflection Questions  
 2/ Reading Section  
 3/ 1 Video  
 4/ 1 Worksheet  
 5/ 1 Assignment  
 6/ Quiz

**Enhance your teaching** with our comprehensive module on problem-solving and decision-making skills.

Learn to **identify and overcome blocks** in problem-solving and divergent thinking.

Foster students' **problem-solving abilities, ethical conduct, and leadership qualities** and gain strategies to address **personal and social issues effectively**.

## Week 5

**Cognitive Skills**

2 hours

1/ Reflection Question  
 2/ Reading Section  
 3/ 1 Video  
 4/ 1 Worksheet  
 5/ 1 Assignment  
 6/ Quiz

Delve into the significance of **cognitive abilities** and their impact on learning.

Learn strategies to **improve attention, foster divergent thinking, and enhance working memory** among students.

Address **memory challenges** effectively with the cognitive skills module.

## Week 6

**Social Communication**

2 hours

1/ Reflection Questions  
 2/ Reading Section  
 3/ 1 Video  
 4/ 1 Worksheet  
 5/ 1 Assignment  
 6/ Quiz

Gain insights into understanding **verbal and nonverbal cues**, crucial for fostering connections.

Explore the role of **social communication** in children's development.

Learn strategies to promote **active listening, turn-taking, and motivate students to initiate communication**.

## Week 7

**Need-Based Approach**

2 hours

1/ Reflection Questions  
 2/ Reading Section  
 3/ 1 Video  
 4/ 1 Worksheet  
 5/ 1 Assignment  
 6/ Quiz

Enrich your teaching approach with our course on the **need-based curriculum**.

Understand its role and benefits in catering to diverse learning needs.

Explore strategies to identify **learning styles at various levels**, ensuring personalized education.

## Week 8

## SEEL for CWSN

2 hours

- 1/ Reflection Questions
- 2/ Reading Section
- 3/ 1 Video
- 4/ 1 Worksheet
- 5/ 1 Assignment
- 6/ Quiz

Empower yourself to support children with special educational needs with our **SEEL-based curriculum course**.

Discover the benefits of SEEL in **fostering resilience, self-worth, and a growth mindset** in CWSN.

Learn strategies to build **self-management skills, enable critical thinking, and promote overall well-being**.

## Week 9

## Screening Strategies

2 hours

- 1/ Reflection Questions
- 2/ Reading Section
- 3/ 1 Video
- 4/ 1 Worksheet
- 5/ 1 Assignment
- 6/ Quiz

Maximize your impact as an educator with our course on **screening tools and assessment levels**.

Discover the positive implications of screening tools in **identifying student strengths and improvement areas**.

Learn to maintain an **unbiased approach** and create **need-based curriculum** and master **progress tracking techniques** for personalized student development.

## Week 10

## Students Well-Being

2 hours

- 1/ Reflection Questions
- 2/ Reading Section
- 3/ 1 Video
- 4/ 1 Worksheet
- 5/ 1 Assignment
- 6/ Quiz

Equip yourself to support **students' holistic development** with our course.

Explore **developmental milestones and mental health issues** across various levels.

Learn evidence-based strategies to **promote mental well-being** in the classroom.

## Week 11

## Positive Classroom Management

2 hours

- 1/ Reflection Questions
- 2/ 1 Video
- 3/ 1 Worksheet
- 4/ 1 Assignment
- 5/ Quiz

Transform your classroom with our course on **incorporating SEEL principles**.

Discover strategies for **positive classroom management** and develop SEEL lesson plans tailored to student needs.

Dive into **real-world case studies** to apply SEEL effectively.



# Requirements

8

This course is suitable for:

**Teachers**

**Counsellors**

**Trainers**

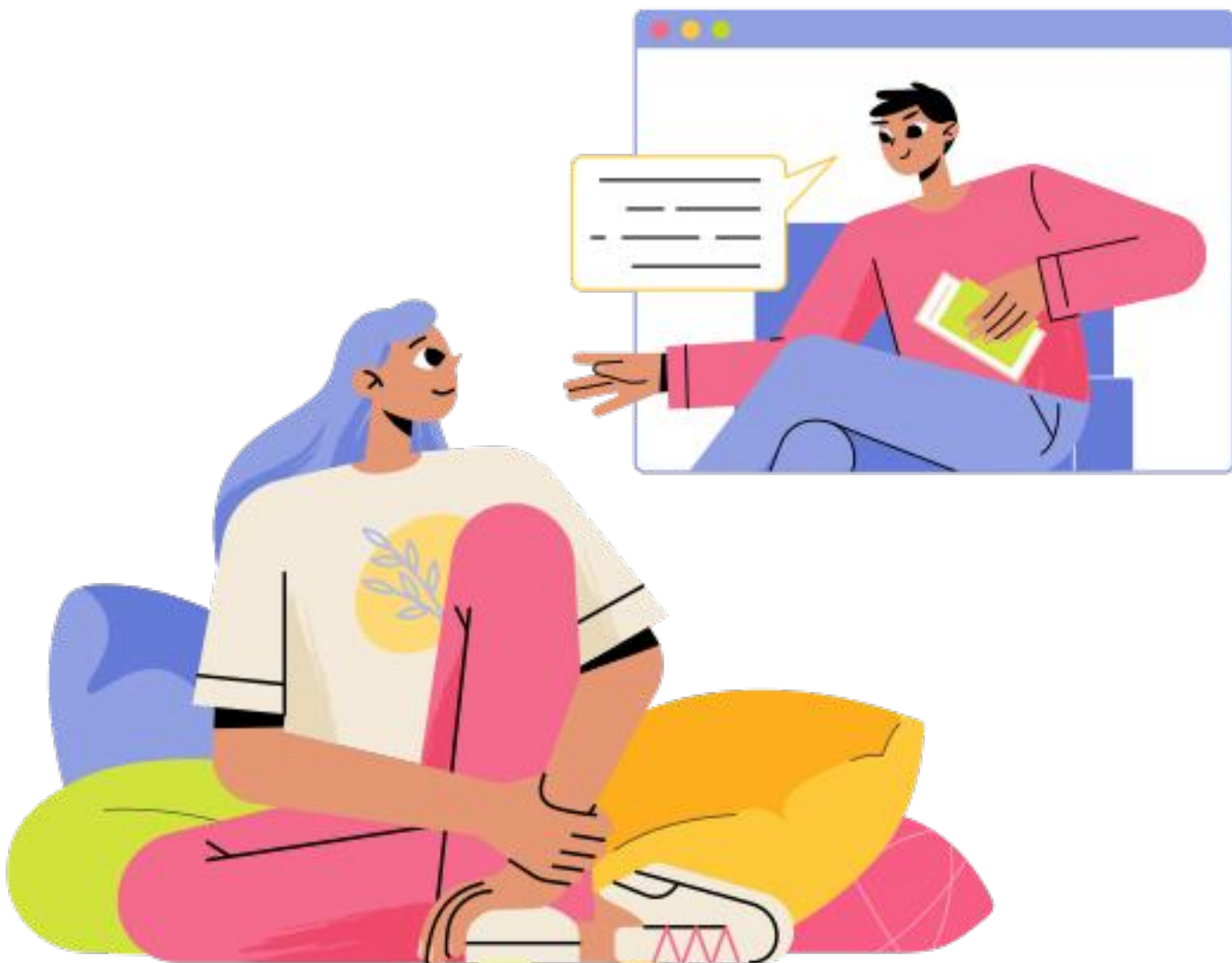
**Parents**

**Caregivers**

**Non-profit  
organizations**

**Educational  
institutions**

It is designed for individuals from various backgrounds who are interested in enhancing their understanding and skills in Social-Emotional Learning.





# Preventive Health Care Diploma Certificate Benefits

10

*Aligned with NEP 2020 & NCR 2023, this SEEL diploma equips educators with child preventive care expertise and student well-being champion skills.*



## Recognized Certification

Receive a certificate for 25 hours of CPD training, adding value to your credentials.



## Effective Classroom Management

Learn techniques to create a conducive learning environment.



## Enhanced Teaching Practices

Acquire practical strategies to effectively promote SEEL learning in your classroom.



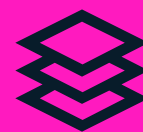
## Networking Opportunities

Connect and collaborate with a supportive community of educators.



## Professional Development

Fulfill CPD criteria, boosting your career growth and opportunities.



## Comprehensive Resources

Access a wide range of learning materials (readings, videos, worksheets) to enrich your teaching.



## Improved Student Engagement

Foster a positive and inclusive learning environment, leading to increased student participation.



## Flexibility

Learn at your own pace with the online program, fitting professional development into your busy schedule.



## Empathy & Emotional Intelligence

Support student well-being (emotional & social needs)



## Holistic Approach

Integrate SEEL learning for comprehensive student development.

# Understanding SEEL Framework

11

The **9 domains** of Social, Emotional, Ethical and Logical (SEEL) based learning are:



# Sample Certificate

12



A sample of the certificate you will get once you finish the course with a minimum score of **60%** on the assignments or quizzes.

## What is the Preventive Mental Health Care Diploma?

The Preventive Mental Health Care Diploma by Next Generation Nations Learning (NGN Learning) equips educators with skills to promote SEEL (Social, Emotional, Ethical, and Logical) learning in students. Covering Self-Awareness, Self-Management, Social Awareness, Responsible Decision-Making, Cognitive Skills, Social Communication and more, each module enhances teaching practices and student engagement.

## Does this certification fulfil any professional development requirements?

Yes, it fulfils the CPD criteria outlined by the Central Board of Secondary Education (CBSE).

## What is CPD by CBSE?

CPD stands for Continuing Professional Development, a framework outlined by the Central Board of Secondary Education (CBSE) in India. CPD is designed to help educators maintain and enhance their knowledge and skills, ensuring that they remain effective in their roles. The SEEL Certification Program by NGN Learning is aligned with the CPD framework outlined by CBSE, providing educators with valuable training that contributes to their professional development.

## Who can enroll in the Preventive Mental Health Care Diploma?

The program is open to school counselors, teachers, principals, psychologists, and anyone interested in behavioural management in educational or home settings. There are no specific prerequisites for enrollment.

## **What is the duration of the Preventive Mental Health Care Diploma?**

The program is designed to be completed in approximately 11 weeks, with a weekly study commitment of 2-3 hours.

## **Is the Preventive Mental Health Care Diploma conducted online?**

Yes, the program is conducted online, allowing participants to learn at their own pace. Participants will need a personal computer with the Chrome web browser installed, equipped with audio and video capabilities.

## **How is the Preventive Mental Health Care Diploma structured?**

The program is structured into 11 modules, with each module focusing on a specific aspect of SEEL learning. Participants will engage with reading materials, videos, worksheets, and quizzes as part of their learning experience.

## **Is there a certification provided upon completion of the Preventive Mental Health Care Diploma?**

Yes, participants who complete all quizzes and assignments with a 60% score or higher will receive a certification from NGN Learning. This certification is recognized for 25 hours of Continuing Professional Development (CPD) training.

## **Is there a certification provided upon completion of the Preventive Mental Health Care Diploma?**

Yes, participants who complete all quizzes and assignments with a 60% score or higher will receive a certification from NGN Learning. This certification is recognized for 25 hours of Continuing Professional Development (CPD) training.



## **How much does the Preventive Mental Health Care Diploma cost?**

The enrollment fee for the Preventive Mental Health Care Diploma is ₹ 15000.

## **How can I enroll in the Preventive Mental Health Care Diploma?**

To enroll in the program, visit the NGN Learning website and click on the "Enroll Now" button. Follow the instructions to complete the enrollment process.

## **Can I contact NGN Learning for more information about the Preventive Mental Health Care Diploma?**

Yes, you can contact NGN Learning at [admin@ngnlearning.com](mailto:admin@ngnlearning.com) or +91-93107 22670 for more information about the program.

## **Is financial assistance available for the Preventive Mental Health Care Diploma?**

NGN Learning does not currently offer financial assistance for the program. However, participants may explore external funding options or employer sponsorship.

## **Are there group discounts available?**

Yes, NGN Learning offers group discounts for the Preventive Mental Health Care Diploma. Group discounts are available for organizations or groups that enroll multiple participants. For more information on group discounts and pricing, please contact NGN Learning directly at [admin@ngnlearning.com](mailto:admin@ngnlearning.com) or +91-93107 22670.

## What will I get upon completing the Preventive Mental Health Care Diploma?

Upon completing the Preventive Mental Health Care Diploma, you will receive:

- A certification from NGN Learning, recognized for 25 hours of Continuing Professional Development (CPD) training.
- Comprehensive knowledge and skills in promoting social, emotional, ethical, and logical (SEEL) learning in educational and home settings.
- Practical strategies and techniques to enhance your teaching practices and student engagement.
- Access to a supportive community of educators and professionals dedicated to preventive mental healthcare.
- The ability to champion SEEL skills and create inclusive, empathetic, and resilient learning environments for students.

These benefits will empower you to make a positive impact on students' lives and contribute to their holistic development.





# Our Team



Sanjeev Tanna

CEO AND FOUNDER

NGN Learning™  
Sanjeev Tanna Education  
Private Limited (STEPL)  
♀ Mumbai, India

NGN Soft Inc.  
♀ San Jose, California, USA



Ekta Juswani

DEPARTMENT HEAD - SEEL  
DEVELOPMENTAL & COUNSELING PSYCHOLOGIST

B.Sc  
Early Childhood Care &  
Education

M.Sc  
Developmental  
Psychology

M.A  
Counseling  
Psychology

PG. Diploma  
Guidance &  
Counseling

DUET-2020  
HS AIR-14



Zaheda Jeewa

LEAD CHILD DEVELOPMENTAL PSYCHOLOGIST  
DEVELOPMENTAL & COUNSELING PSYCHOLOGIST

B.A  
Psychology

M.A  
Counseling Psychology



Tejaswini BH

FAMILY AND CHILD THERAPIST  
FAMILY AND CHILD COUNSELLING

MSc (N)  
Psychiatry

PG Diploma  
Family and  
Child Therapy

PG Diploma  
Counselling



S Durgadevi

SENIOR CHILD PSYCHOLOGIST  
PSYCHOLOGIST

B.Sc  
Psychology

M.Sc  
Applied  
Psychology

(TNSET)  
State Eligibility Test

(NET)  
National Eligibility  
Test



# NGN LEARNING SANJEEV TANNA EDUCATION PRIVATE LIMITED

Contact us at [support@ngnlearning.com](mailto:support@ngnlearning.com)

[www.ngnlearning.com](http://www.ngnlearning.com)



Website



Enroll Now